

BASI DI DATI INSTALLAZIONE AMBIENTE SQL

Danilo Croce

2021



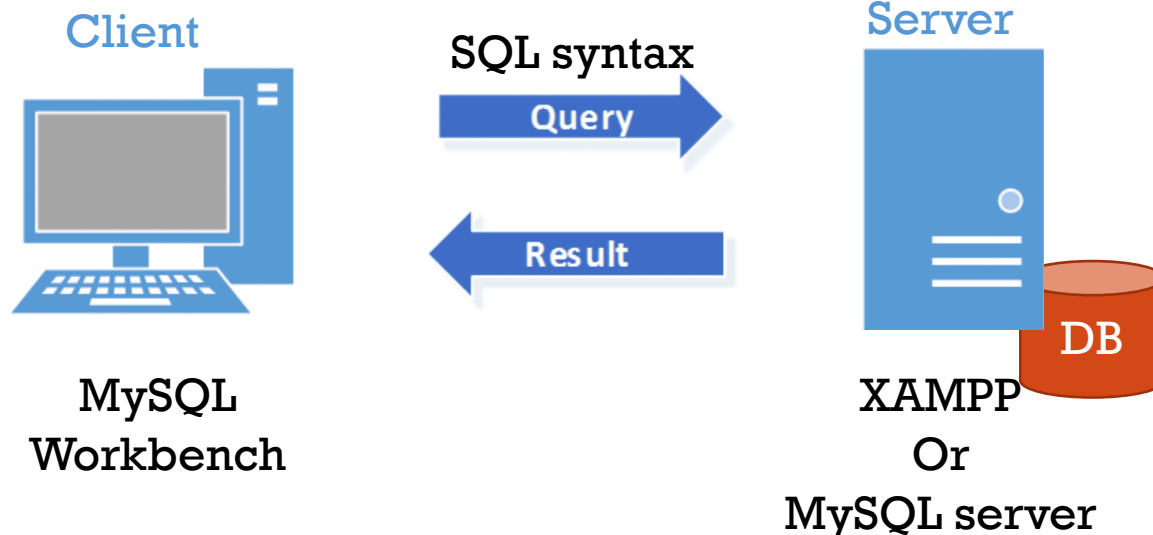
OUTLINE

- Environment
 - Instructions to install the SQL server
- Implementation of the model: MariaDB (MySQL)



ACCESSING A DATABASE: A CLIENT/SERVER SCHEMA

- Modern SQL systems can be accessed mainly according to a client/server schema
 - Databases are located at server side => The SQL Server
 - Our applications access to data by connecting to the server => The client
 - In simple scenarios (our case) the Client and Server are running on the same machine (e.g., our laptop)



ENVIRONMENT: XAMPP

- XAMPP – is the most popular PHP development environment
- “XAMPP is a completely free, easy to install Apache distribution containing MariaDB, PHP, and Perl. The XAMPP open source package has been set up to be incredibly easy to install and to use.”

Letter	Meaning
X	cross-platform
A	Apache HTTP Server
M	MariaDB (formerly MySQL)
P	PHP
P	Perl

<https://www.apachefriends.org/>



ENVIRONMENT: XAMPP

- Download page:
- <https://www.apachefriends.org/download.html>

Download

XAMPP is an easy to install Apache distribution containing MariaDB, PHP, and Perl. Just download and start the installer. It's that easy.

XAMPP for Windows 7.3.27, 7.4.16 & 8.0.3

Version	Checksum	Size
7.3.27 / PHP 7.3.27 What's Included?	md5 sha1 Download (64 bit)	154 Mb
7.4.16 / PHP 7.4.16 What's Included?	md5 sha1 Download (64 bit)	156 Mb
8.0.3 / PHP 8.0.3 What's Included?	md5 sha1 Download (64 bit)	156 Mb

[Requirements](#) [Add-ons](#) [More Downloads](#) »

Windows XP or 2003 are not supported. You can download a compatible version of XAMPP for these platforms [here](#).



ENVIRONMENT: PERMISSIONS

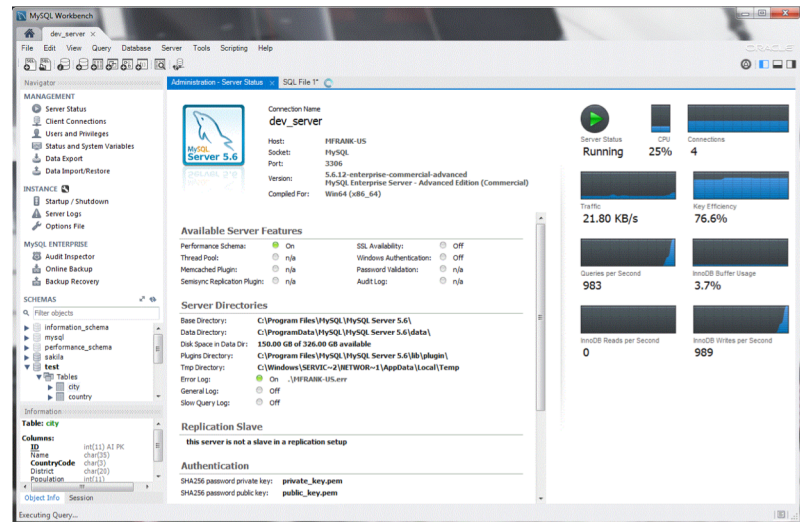
- MySQL 8.0 Reference Manual: [Administration-Related Issues](#)
- B.3.3.2 How to Reset the Root Password
- <https://dev.mysql.com/doc/refman/8.0/en/resetting-permissions.html>



ENVIRONMENT: MYSQL WORKBENCH

MySQL Workbench - unified visual tool for:

- data modeling
- SQL development
- database administration tools

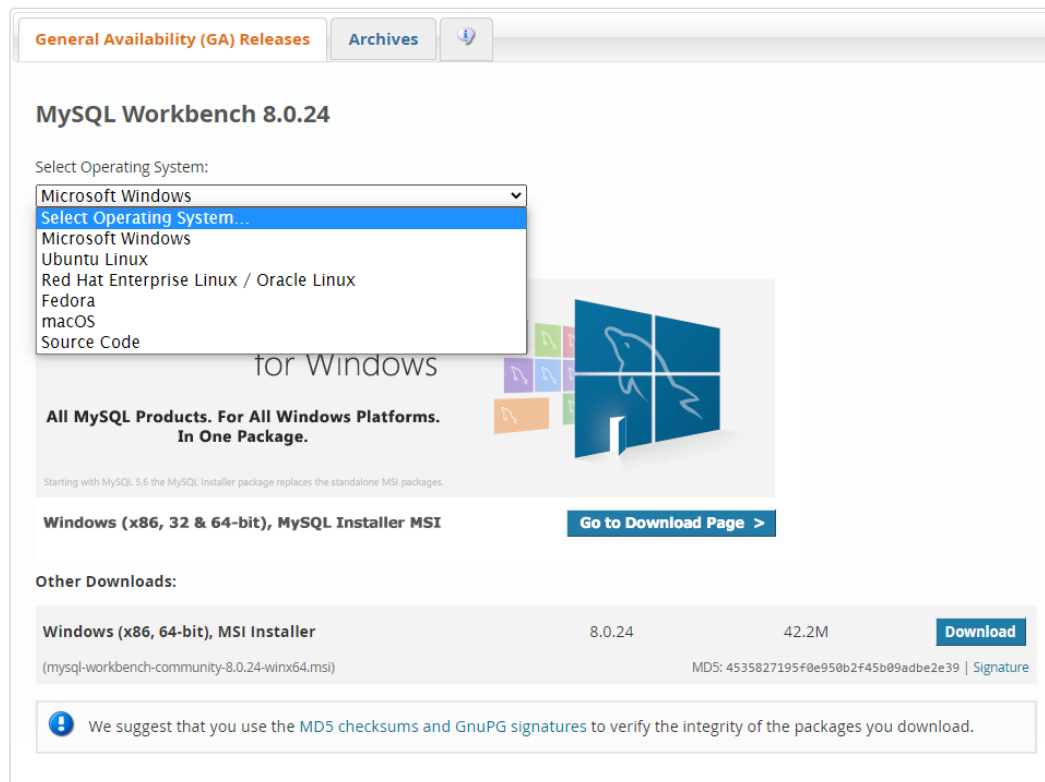


<https://www.mysql.com/products/workbench/>



ENVIRONMENT: MYSQL WORKBENCH

- Download page:
- <https://dev.mysql.com/downloads/workbench/>



General Availability (GA) Releases Archives

MySQL Workbench 8.0.24

Select Operating System:

- Microsoft Windows
- Select Operating System...
- Microsoft Windows
- Ubuntu Linux
- Red Hat Enterprise Linux / Oracle Linux
- Fedora
- macOS
- Source Code

for Windows

All MySQL Products. For All Windows Platforms. In One Package.

Starting with MySQL 5.6 the MySQL Installer package replaces the standalone MSI packages.

Windows (x86, 32 & 64-bit), MySQL Installer MSI [Go to Download Page >](#)

Other Downloads:

Operating System	Version	Size	Download
Windows (x86, 64-bit), MSI Installer	8.0.24	42.2M	Download

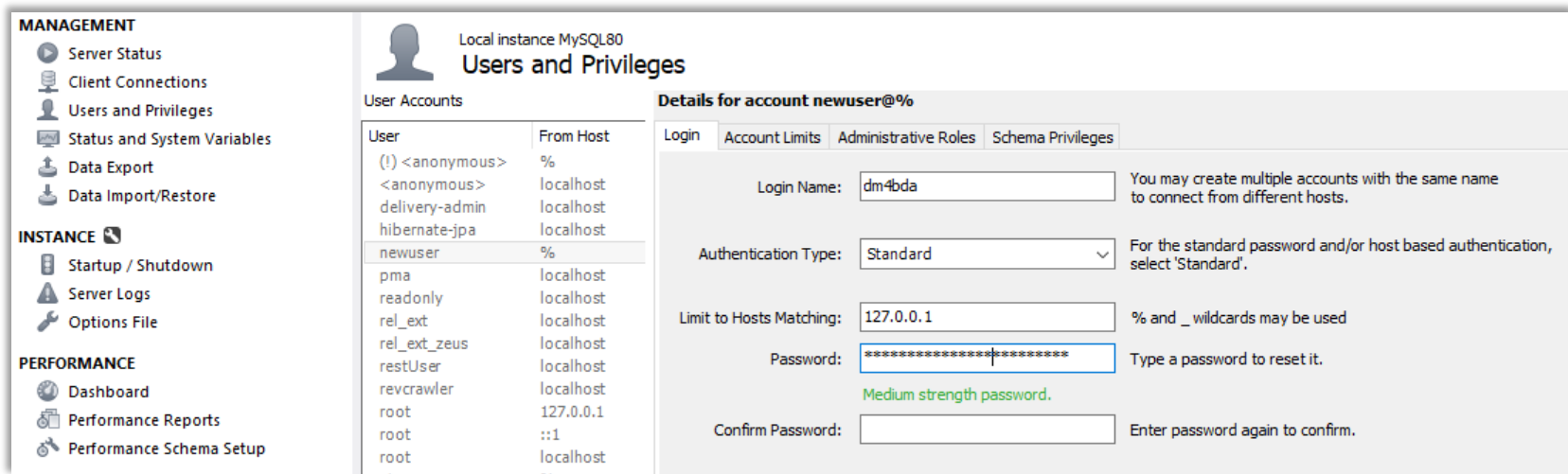
(mysql-workbench-community-8.0.24-winx64.msi) MD5: 4535827195f0e950b2f45b09adbe2e39 | [Signature](#)

! We suggest that you use the [MD5 checksums](#) and [GnuPG signatures](#) to verify the integrity of the packages you download.



ENVIRONMENT: MYSQL WORKBENCH

User accounts and Permissions



The screenshot shows the MySQL Workbench interface for managing user accounts. The left sidebar contains navigation menus for MANAGEMENT, INSTANCE, and PERFORMANCE. The main area is titled 'Local instance MySQL80 Users and Privileges' and is divided into two sections: 'User Accounts' and 'Details for account newuser@%'.

User Accounts Table:

User	From Host
(!) <anonymous>	%
<anonymous>	localhost
delivery-admin	localhost
hibernate-jpa	localhost
newuser	%
pma	localhost
readonly	localhost
rel_ext	localhost
rel_ext_zeus	localhost
restUser	localhost
revcrawler	localhost
root	127.0.0.1
root	::1
root	localhost

Details for account newuser@%:

Tabbed interface with 'Login' selected. Fields include:

- Login Name: dm4bda (Note: You may create multiple accounts with the same name to connect from different hosts.)
- Authentication Type: Standard (Note: For the standard password and/or host based authentication, select 'Standard'.)
- Limit to Hosts Matching: 127.0.0.1 (Note: % and _ wildcards may be used)
- Password: [masked] (Note: Type a password to reset it. Medium strength password.)
- Confirm Password: [empty] (Note: Enter password again to confirm.)

```
CREATE USER `dm4bda-read`@'%' IDENTIFIED BY "4AG8@D@JX_EAht#L";  
GRANT SELECT ON `dm4bda-musicians`. * TO 'dm4bda-read'@'%';
```

